

## About Our Service Centres

Various automotive businesses at city and regional locations have been sub-contracted as Guardian Service Centres to provide all aspects of interlock program services to participants using their established technical skills. Our dealer network extends throughout Australia, so you'll never be far from assistance if required. As interlock programs expand, new service centres are established. Participants should check [www.guardianinterlock.com.au](http://www.guardianinterlock.com.au) for updated information on centres, or call Guardian on 1300 881 005.

### **Metro:**

**Autlec Automotive**  
Clayton North Ph. (03) 9547 4474

**Auto Electric Service**  
North Melbourne Ph. (03) 9329 9652

**BSK Auto Electrical**  
Melton Ph. (03) 8746 5715

**BSK Auto Electrical**  
Sunshine Ph. (03) 8354 8589

**Current Auto Electrical**  
Airport West Ph. 0407 815 327

**Dickson Automotive**  
Caulfield Ph. (03) 9571 9298

**Lilydale Auto Electrical & Melbourne Prestige Automobile Repairs**  
Croydon Ph. (03) 9725 2886

**Lonsdale St Auto Electrics**  
Dandenong South Ph. (03) 9706 5525

**Narre Warren Auto**  
Narre Warren Ph. (03) 9704 7207

### **Rowville Auto Electrics**

Rowville Ph. (03) 9763 4099

**Sunbury Exhaust & Performance Centre**  
Sunbury Ph. (03) 9744 3837

**Toffolon Motors**  
Seaford Ph. 0402933904

### **Regional:**

**Auto-Lec Solutions**  
Wonthaggi Ph. (03) 5672 2921

**Cobram Auto Sparks**  
Cobram Ph. (03) 5871 1706

**Daryl Robertson Auto Electrical**  
Horsham Ph. (03) 5381 1532

**Greville Auto Electrical**  
Delacombe Ph. (03) 5335 5588

**Maffescioni Motors**  
Maryborough Ph. (03) 5461 1303

**McBean & Lawson Auto Electrical**  
Wodonga Ph. (02) 6056 2035

### **Membreys Auto Electrical**

Koondrook Ph. (03) 5453 1688

**Mildura Auto Electrics**  
Mildura Ph. (03) 5051 9801

**Phillips Auto Spark**  
Somerville Ph. (03) 5977 7166

**Peter Molan Auto Electrics**  
Warnambool Ph. 0427 928 824

**Rod Wild Auto Electrics**  
Shepparton Ph. (03) 5821 9992

**Rye Car Hire**  
Rye Ph. (03) 5985 3737

**Sale Auto Electrical**  
Sale Ph. (03) 5144 1245

**Sam's Auto Electrical**  
Golden Square Ph. (03) 5442 5260

**Waring's Auto Electrical**  
South Geelong Ph. (03) 5222 6944

**Watt Works Auto Electrics**  
Morwell Ph. (03) 5134 3469

## Information & Facts

The Victorian Alcohol Interlock Program has been operating since 2002 and recent changes to legislation means that all offenders over 0.05 BAC require an interlock fitted to their vehicle for a specified period after their disqualification period. The interlock will prevent the vehicle from being started if the driver has traces of alcohol or has been drinking while recording the use of the interlock over the period, including images of the person using the interlock. The interlock log and images are provided directly to VicRoads.

Do not use the interlock as a breath tester because everything is logged and could cause an extension to your interlock period.

For further information visit the following website:

[www.vicroads.vic.gov.au/licences/demerit-points-and-offences/drink-driving-offences](http://www.vicroads.vic.gov.au/licences/demerit-points-and-offences/drink-driving-offences)

Aug 2022



## Information Guide Victorian Alcohol Interlock Program



## Guardian 2030

Guardian Interlock Systems Australasia Pty Limited

ABN 47 062 932 932

Phone: (02) 8853 6200 Fax: 02 8853 6201

Email: [admin@guardianinterlock.com.au](mailto:admin@guardianinterlock.com.au)

Web: [www.guardianinterlock.com.au](http://www.guardianinterlock.com.au)



Quality  
ISO 9001  
Lic 22831  
SAI GLOBAL



Australian  
Standard  
AS3547  
Lic SMK40926  
SAI Global

### 1. What is an interlock ?

The interlock is a breath testing device that stops the driver from starting their vehicle when they have a Blood Alcohol Concentration (BAC) at or higher than 0.02%. The interlock has a camera associated to capture an image as the interlock is being used. This data is used by VicRoads to assess eligibility to complete the interlock program.

### 2. How does the interlock work?

When the interlock device is fitted to a vehicle, the driver must blow and hum into the interlock head unit before being able to start the vehicle. After the interlock has received a breath sample, it will be analysed and the message "Start" will appear on the screen if the result was under 0.02% BAC. The driver can simply start the vehicle and drive away.

After a random period of time, the interlock will indicate to the driver that they need to retest. There is no need to turn the vehicle off. The driver must give another breath sample and if passed, the driver may then continue on their way. You must use the vehicle at least twice in any period or the period will not count toward completion.

### 3. What happens after the interlock is installed?

30 days after installation the vehicle has to be returned for the interlock to be downloaded and the next service appointment set. This servicing involves payment of fees for the next period. A summary report will be provided (at no cost) showing how your program is running and events that have been recorded.

### 4. How long does it take to install?

A standard vehicle takes around 2 hours for installation and training. Where additional time is required for installation or training, the situation will be explained and extra fees may apply.

### 5. What will I need to bring with me on the day?

You will need your VicRoads letter or Court Order, photo ID, concession card (conditions apply) and motor vehicle. The owner's permission is always required.

### 6. Is it expensive?

Initially you need to pay for the vehicle installation and the first month's lease fee for the interlock which is leased and serviced on a monthly basis. The overall cost of installation will be determined by the vehicle type (standard or non-standard installation), and length your program. The VicRoads Cost Recovery fee is also payable by anyone on the Victorian Interlock Program on or after 30 Jan 2015. You also have a Loss Protection Plan option, which reduces your liability if the equipment is stolen. Talk to Guardian about these aspects.

### 7. How do I complete the program?

Participants have to demonstrate that they can separate drinking and driving over a 6 month period before they will be eligible to hold a licence without an interlock condition. For further information visit the VicRoads website: [www.vicroads.vic.gov.au](http://www.vicroads.vic.gov.au)

Don't be afraid to ask for help if you are having difficulties. Guardian is proud to be an active member in the community, supporting many charities each year and providing information on pro-active measures to implement work safety and avoid drink driving.

### 8. Can anyone drive the vehicle after an interlock device has been fitted?

Yes, anyone can drive the vehicle but you may still be responsible for what is on your log. The interlock camera, where a camera is fitted, captures images of anyone using the interlock.

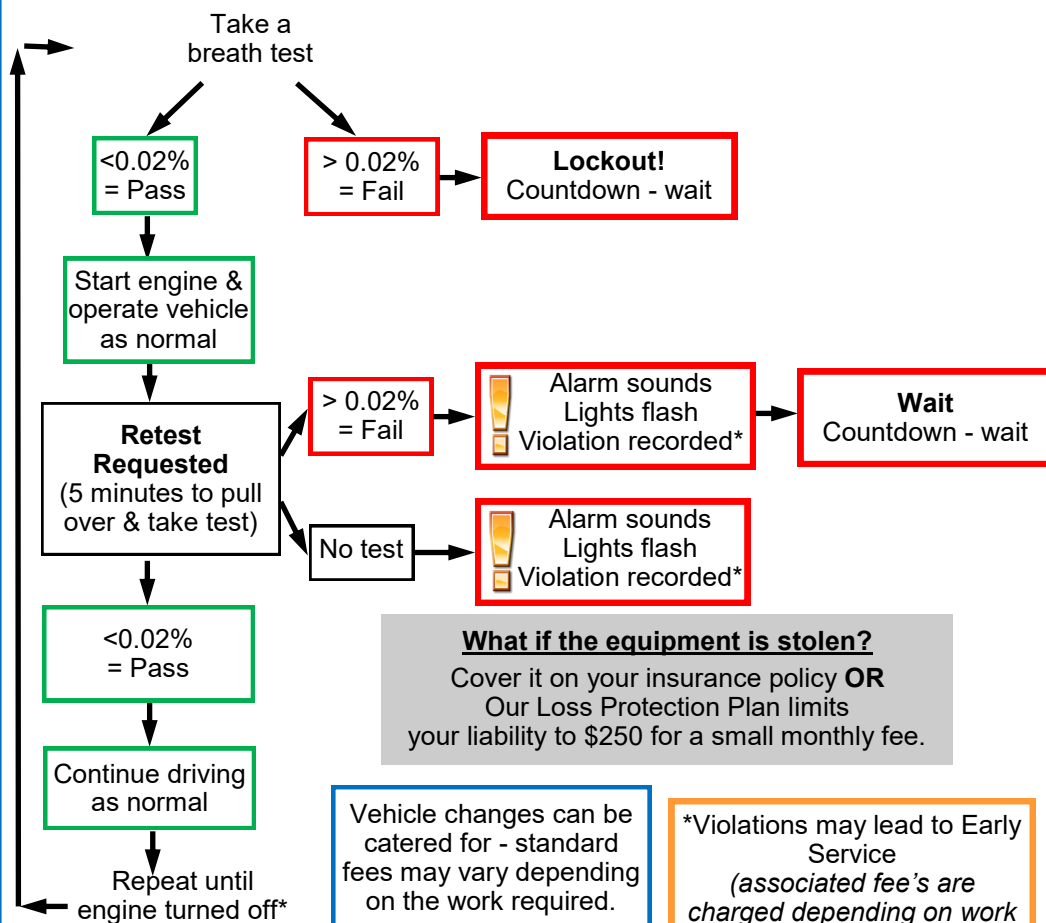
### 9. Why should you choose Guardian ?

We are an Australian, family owned business. Guardian customers can have their interlock monitored anywhere in Australia at the same cost. They do not need to return to the original installer. We provide a 24hr emergency service help line, so if you are having difficulties, you will be able to talk to someone and receive help and technical advice!

Our friendly staff are just a phone call away for any enquiries!

## How does the interlock system work in my car?

Ignition in the ON position



**What if the equipment is stolen?**  
Cover it on your insurance policy OR Our Loss Protection Plan limits your liability to \$250 for a small monthly fee.

Vehicle changes can be catered for - standard fees may vary depending on the work required.

\*Violations may lead to Early Service (associated fee's are charged depending on work involved)

\*3 min stall protect/restart after engine is turned off